

2016.93

N 00°32'11"E

T3N R2E NMPM
T3N R3E NMPM

S 62°31'04"E

UNIT 5

TRACT "A"

N 60°00'00"W

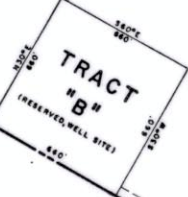
6186.32

532.00
S 18°38'57"W

S 71°01'03"E

2937.51

UNIT 9



8575.77

UNIT 7 SHEET 2 OF 2

TIE TO USGS TRIANGULATION STATION "PYLE" N 48°01'31"E 12,981.88

NOTES

- (A) All bearings shown herein are based on the New Mexico State Plane Coordinate Grid, Central Zone (mean delta alpha = -00° 13' 34").
- (B) Dimensions along curved lines are arc lengths.
- (C) "USGS Triangulation Station Pyle" refers to United States Geological Survey Triangulation Station "Pyle 1910" (standard tablet in place) (having New Mexico State Plane Coordinates, Central Zone, of x = 389,856.50 feet and y = 1,274,463.83 feet).
- (D) Unimproved dedicated public roadways are not maintained by the County Road Department.
- UNLESS OTHERWISE INDICATED:
 - Lot lines are perpendicular to street lines.
 - Public thoroughfares have 50-foot rights-of-way.
 - Cul-de-sacs have radii of 50 feet.
 - Block corner returns shown have a radii of 25 feet and unless otherwise indicated, an arc length of 59.7 feet.
 - Reverse curves shown at cul-de-sacs have radii of 25 feet and arc lengths of 21.83 feet and 50.77 feet for "in-line" and "off-set" types respectively.
 - There is a 5-foot utility easement along each side of all side lot lines.

Cliff A. Spirack, being duly sworn, deposes and says that the property herein described and subdivided does not lie within the planning and platting jurisdiction of a municipality.

Cliff A. Spirack
CLIFF A. SPIRACK, DEED NO. 4372

STATE OF NEW MEXICO } SS
COUNTY OF SOCORRO

On this 23rd day of August, 19 26, before me appeared Cliff A. Spirack, known to me to be the person referred to in and executed the foregoing affidavit, and acknowledged that he executed the same as his free act and deed.

My commission expires on the 16th day of August, 19 26.

George J. Spring
NOTARY PUBLIC



SURVEYOR'S CERTIFICATION
This is to certify that this plat was prepared under my direct supervision and is true and correct to the best of my knowledge and belief.

Cliff A. Spirack
CLIFF A. SPIRACK, DEED NO. 4372



STATE OF NEW MEXICO }
COUNTY OF SOCORRO

Filed in my office on

at 11:15 O'Clock

Fee 2.50

By *Mark White*

Horizontal consent to...
Horizontal as school...
use by the...
community...
hereby deli...
in Article...
is...
plat...
By 1
STATE OF ARIZONA }
COUNTY OF PIMA }
The foregoing...
by L. I. Steele, Lic...
corporation.
My commission